

CERTIFICATE OF LOCATION OF GOVERNMENT CORNER

NORTH QUARTER Corner of Section 16, Township 107, Range 41, 5TH P.M.

STATE OF MINNESOTA, County of MURRAY

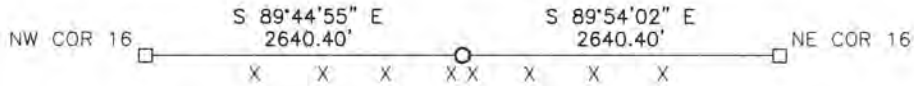
At the corner location shown on the sketch:

On _____ found a _____
DATE

left monument as found, lowered monument, removed monument (explain)

On 4/7/16 placed a 1 inch pipe with seal #43844
DATE

SKETCH OF REFERENCE TIES



Minnesota State Plane Coordinate
System Murray County Datum
NAD83 (1996)

N: 184598.015
E: 498211.839

Statement of evidence relative to this corner location is on back of page.

I hereby certify that this document and the data contained herein was prepared by me or under my direct supervision.

[Signature] 1/16/17
SIGNATURE DATE

Registration No. 43844

- Land Surveyor, Professional Engineer
- County Surveyor, County Engineer

OFFICE OF THE COUNTY RECORDER
County of MURRAY

I hereby certify that this document was filed in the Co. Recorders office at 9:00 A.M on the 17TH day of FEBRUARY A.D. 20 17

County Recorder [Signature]
By _____, Deputy

DOCUMENT NO. _____

Statement of Evidence

In 1861, L.G.M. Fletcher did the original subdivision of the township.

On April 7, 2016, Bueltel-Moseng Land Surveying set a 1 inch pipe with seal #43844 at equal distances between section corners and in line with east-west fence.